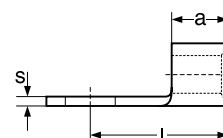
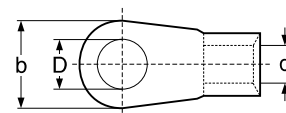


dle DIN 46234

pro Cu laněné vodiče (nelze použít pro plné vodiče!)

**Materiál:** elektrovodná měď

**Povrchová úprava:** galvanické pocínování



Označení	Průřez vodiče v mm <sup>2</sup>	Rozměry v mm			s	l	D
		d	b	a			
25 x 5 KU-SP	25	7,5	12,0	11,0	1,5	25	5,3
25 x 6 KU-SP		7,5	12,0	11,0	1,5	25	6,5
25 x 8 KU-SP		7,5	16,0	11,0	1,5	25	8,4
25 x 10 KU-SP		7,5	18,0	11,0	1,5	26	10,5
25 x 12 KU-SP		7,5	22,0	11,0	1,5	31	13,0
35 x 6 KU-SP	35	9,0	15,0	12,0	1,6	26	6,5
35 x 8 KU-SP		9,0	16,0	12,0	1,6	26	8,4
35 x 10 KU-SP		9,0	18,0	12,0	1,6	27	10,5
35 x 12 KU-SP		9,0	22,0	12,0	1,6	31	13,0
50 x 6 KU-SP	50	11,0	18,0	16,0	1,8	34	6,5
50 x 8 KU-SP		11,0	18,0	16,0	1,8	34	8,4
50 x 10 KU-SP		11,0	18,0	16,0	1,8	34	10,5
50 x 12 KU-SP		11,0	22,0	16,0	1,8	36	13,0
70 x 8 KU-SP	70	13,0	22,0	18,0	2,0	38	8,4
70 x 10 KU-SP		13,0	22,0	18,0	2,0	38	10,5
70 x 12 KU-SP		13,0	22,0	18,0	2,0	38	13,0
70 x 16 KU-SP		13,0	28,0	18,0	2,0	42	17,0
95 x 8 KU-SP	95	15,0	24,0	20,0	2,5	42	8,4
95 x 10 KU-SP		15,0	24,0	20,0	2,5	42	10,5
95 x 12 KU-SP		15,0	24,0	20,0	2,5	42	13,0
95 x 16 KU-SP		15,0	28,0	20,0	2,5	44	17,0
120 x 8 KU-SP	120	16,5	24,0	22,0	3,0	44	8,4
120 x 10 KU-SP		16,5	24,0	22,0	3,0	44	10,5
120 x 12 KU-SP		16,5	24,0	22,0	3,0	44	13,0
120 x 16 KU-SP		16,5	28,0	22,0	3,0	48	17,0
150 x 10 KU-SP	150	19,0	30,0	24,0	3,2	50	10,5
150 x 12 KU-SP		19,0	30,0	24,0	3,2	50	13,0
150 x 16 KU-SP		19,0	30,0	24,0	3,2	50	17,0
185 x 12 KU-SP	185	21,0	36,0	28,0	3,5	50	13,0
185 x 16 KU-SP		21,0	36,0	28,0	3,5	50	17,0
240 x 12 KU-SP	240	23,5	38,0	32,0	4,0	56	13,0
240 x 16 KU-SP		23,5	38,0	32,0	4,0	56	17,0
240 x 20 KU-SP*		23,5	44,0	32,0	4,0	68	21,0
300 x 12 KU-SP*	300	27,5	50,0	35,0	4,5	69	13,0
300 x 16 KU-SP*		27,5	50,0	35,0	4,5	69	17,0
300 x 20 KU-SP*		27,5	50,0	35,0	4,5	69	21,0

\*) toto provedení není dle normy DIN 46234

**Doplňující údaje:**

- lisovací nářadí viz. kap. 9, 10